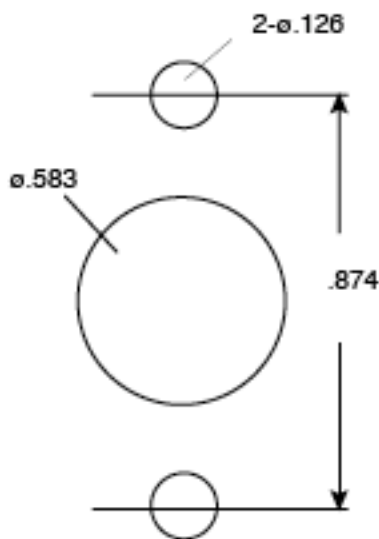
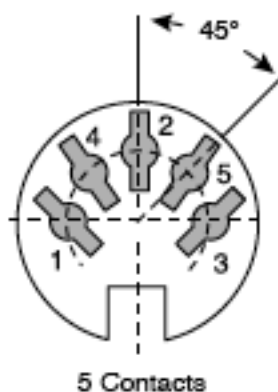


Dimensions (In.)



Panel Cut-out

Specifications:

- Rating: 100VAC 2A
- Insulation resistance: 300MΩ minimum @ 500VDC
- Dielectric strength: 1,000VAC for 1 minute
- Contact resistance: 20mΩ maximum
- Withstand voltage: 1,000VAC for 1 minute
- Insertion force: 4Kg max
- Withdrawal force: 1-3.5Kg

Materials:

1. Insulator: 1 PBT UL94V-O
2. Socket case: nickel plated
3. Contactor: tin plated brass
4. Earth pin: nickel plated brass
5. Rivet: nickel plated aluminum